

*expanding the*  
**TABLE**

AND THE LORD ADDED TO THEIR NUMBERS DAILY

**THOSE WHO WERE BEING SAVED.**

ACTS 2:47



## PHIL CARNUCCIO

lead Pastor of Providence West Chester

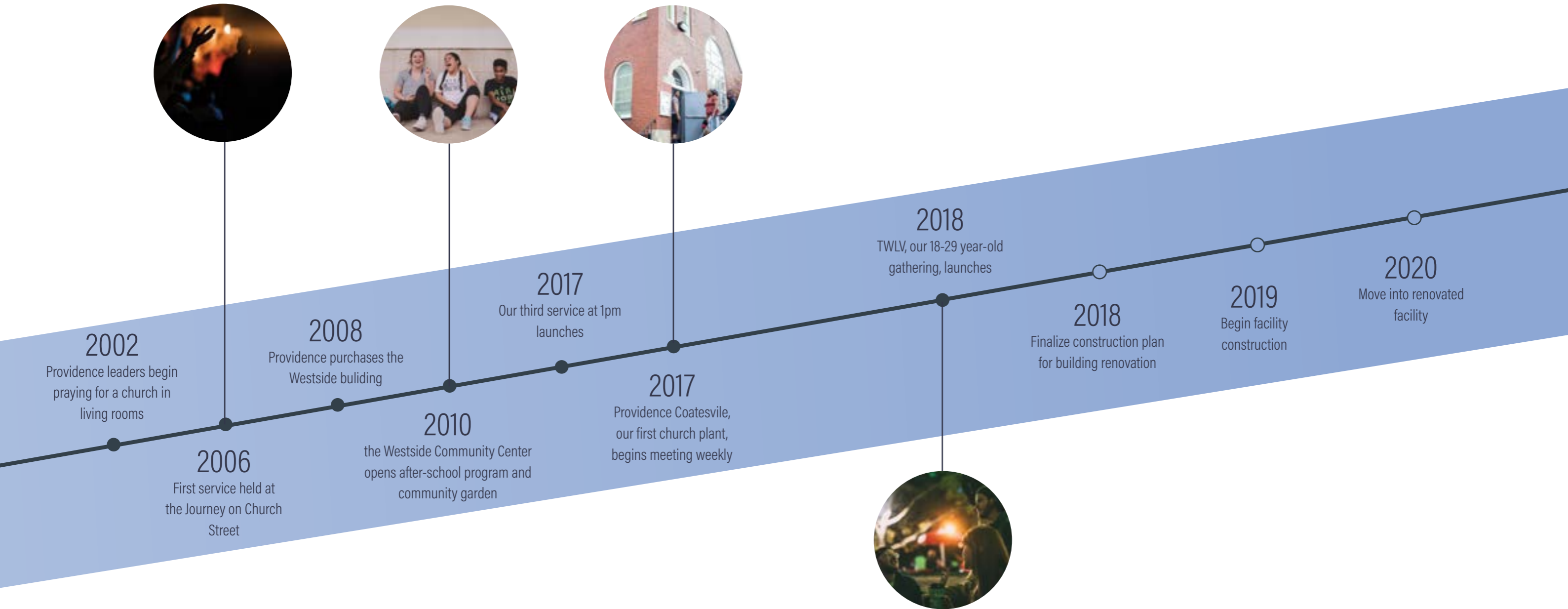
### EPHESIANS 3:20 IT'S TRUE THAT GOD WILL GIVE US IMMEASURABLY MORE THAN WE COULD EVER ASK OR IMAGINE,

and I'm often reminded of that truth when I walk through the doors of Providence. The story of Providence is marked by lives being transformed by the love of Jesus. What started as a prayer meeting in a living room grew into an unimaginable display of people. In 2006, we started meeting officially on Sunday evenings in a small church in West Chester, Pennsylvania. We gathered weekly for prayer, worship, and to celebrate the work of God's grace and truth together. Prior to our evening service each week, we gathered together at the table and began to understand the sacredness of breaking bread as a family. It was in these early days of our history

that family became one of the central values to the culture of Providence. Eleven years later, our family has grown to nearly 700. As such, we have reached the maximum capacity of our current space and need to expand. With your partnership, as we seek to raise \$3.5 million, we'll not only increase our physical space, but we will create more room **for everyone to have a seat at the table.**

# A TIMELINE OF FAITHFULNESS

*from our first meetings as a new church to launching our third service in 2018, we've seen God's faithfulness at every step along the way*



PEOPLE WILL COME FROM EAST AND WEST AND NORTH AND SOUTH, AND WILL TAKE THEIR PLACES AT THE TABLE IN THE KINGDOM OF GOD.

We want every person in the region to have the opportunity to know Jesus Christ and grow in their faith, hope and love for Him. We envision Providence West Chester as the hub from which this mission will happen. The challenge, however is that we have run out of space which limits us in bringing more people to Him. We need to expand our church table to serve our community. **We seek to raise \$3,500,000.**



## THE NEED TO EXPAND

### SUNDAY BUILDING USE

The current capacity for our ballroom is 278, fitting 200 people comfortably, with the Aspen Room holding an additional 50 persons. Currently, we have **on average 700 people attending morning services each week**, with the vast majority of those 700 attending the 9:00am and 11:00am services. Simply put, we have run out of room for adult worshippers during the primary attendance hours on a Sunday morning. We are over 100% capacity in our sanctuary and our parking lot. Statistics tell us that once a church hits 80% a change must be made or growth will be stifled.

In addition to reaching max capacity upstairs, we've reached max capacity downstairs. On average, **150 students attend ProvKids or Providence Student Ministry** programs during a Sunday service.

Finally, community is a high value in the DNA of Providence, and much of that community happens on a Sunday morning. Our current space provides **limited opportunities for people to linger, build relationships, and live life within the body** (on campus) on Sunday mornings.

### WEEKDAY BUILDING USE

Consider that each week, programs like *Emotionally Healthy Spirituality*, baptism seminars, Women's ministry, Westside Community Center, CRU and Young Life gatherings, and other Providence ministry opportunities are helping people grow in their relationship with Christ and engage in community with others. There is an ever increasing demand for space to accommodate these valuable programs and ministry partnerships.

On top of that, we have **a staff of 25 who share one office with four desk spaces**, creating a pressing need for co-working space, meeting areas (20+ meetings per week), and storage. At our current capacity, most of our staff work off-campus or are confined to limited meeting space in our building during the workweek.

Additionally, the Westside Building is **rented two to four times each week, hosting over 575 people** for weddings, fundraisers, and other large events on Friday, Saturday, and Sunday nights. This business remains a vital source of income for Providence Church.



©2018 BERNARDON

view from lower  
parking lot



©2018 BERNARDON

view from upper  
parking lot

# THE PLAN

© 2018 BERNARDON ARCHITECTURE & DESIGN



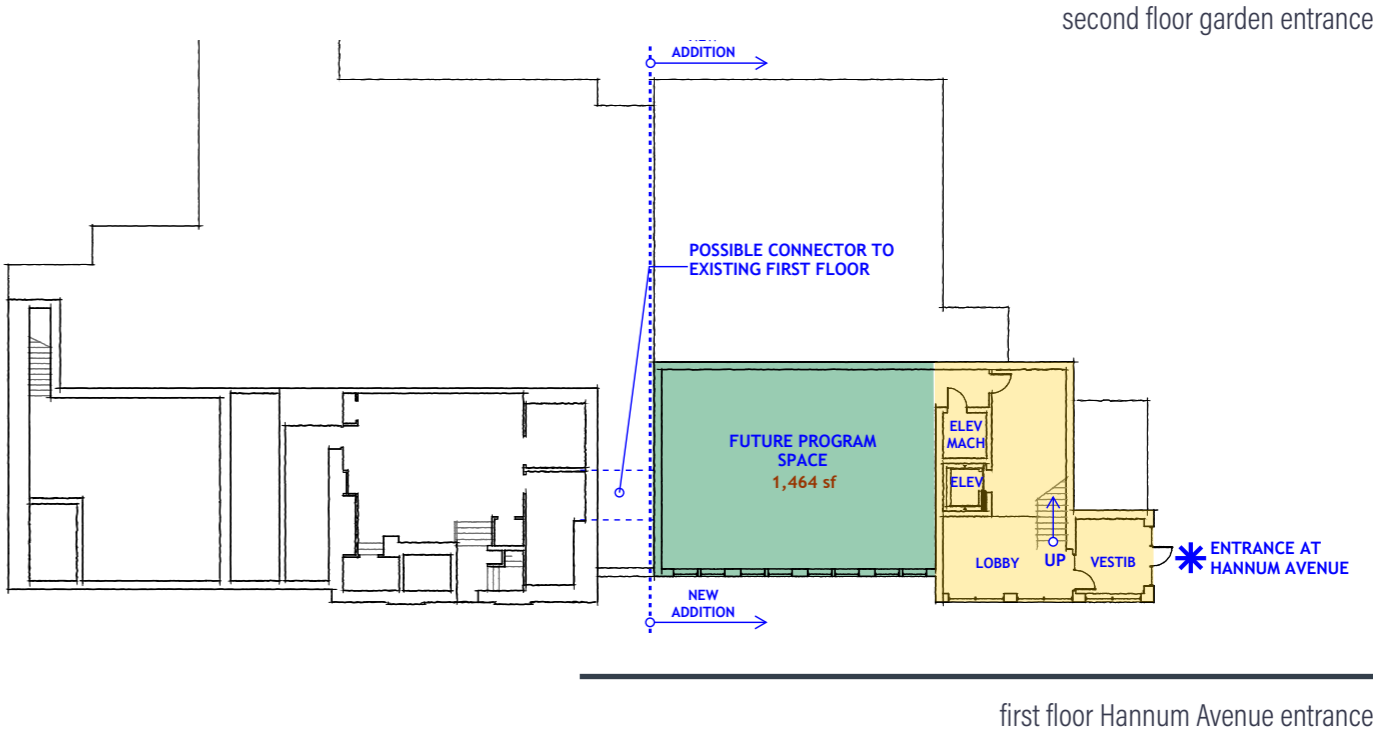
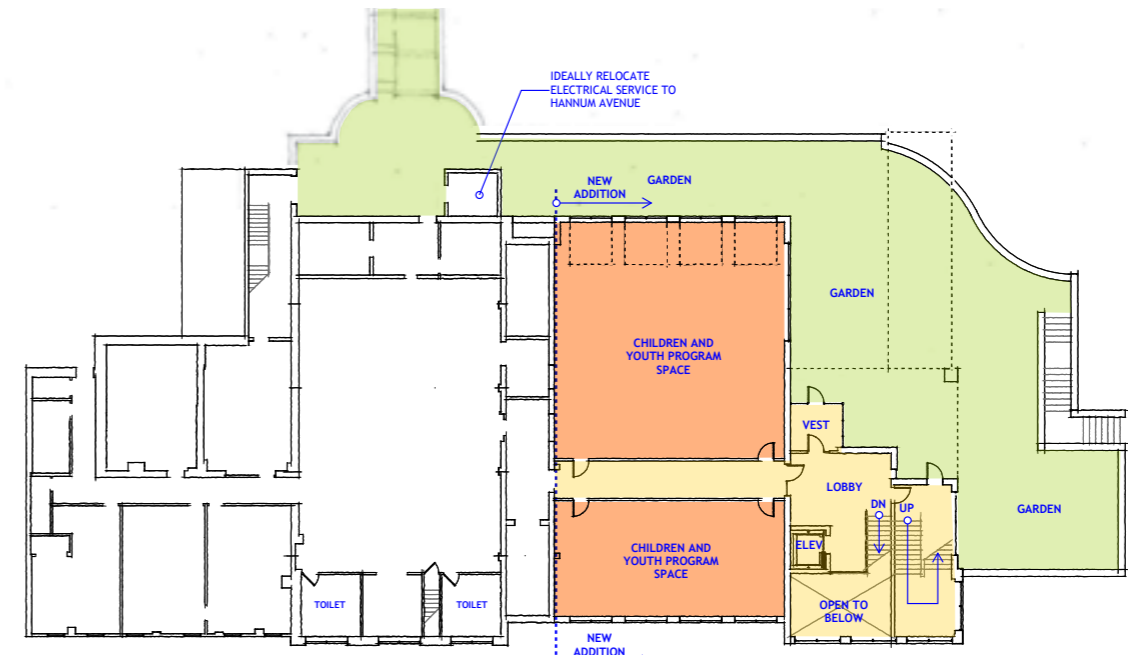
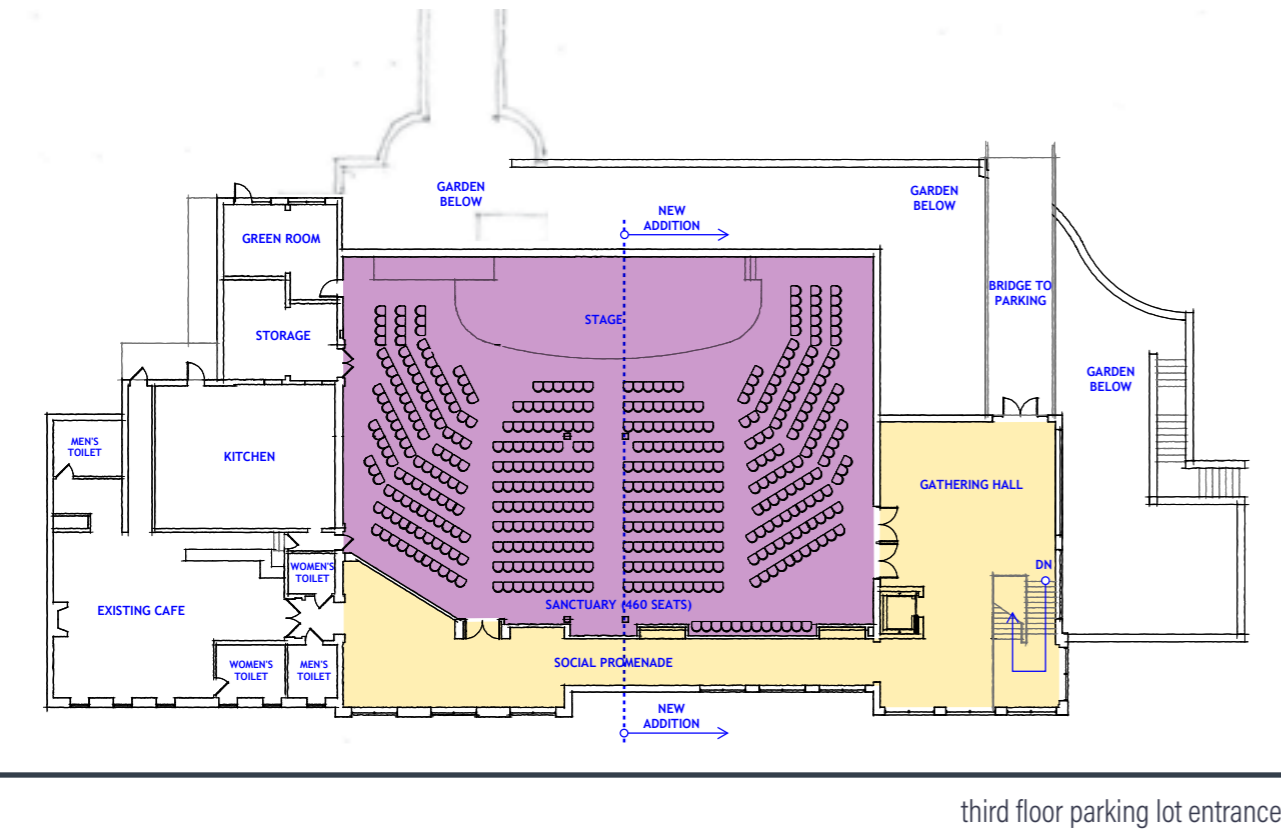
©2018 BERNARDON

view from Hannum Avenue looking east

# EXPANDING THE TABLE

By creating more space through the expansion of our current establishment, our Sunday morning experience will be enhanced as we drastically increase the scope of our ministry by:

- Creating the necessary space to seat approximately 500 people each service
- Creating more meeting space for ministry breakouts and other essential seminars
- Creating more classrooms for our ProvKids and middle school students



# EXPANDING THE TABLE

## PRIORITIES

Capacity to seat 500 people at each service

Classroom space for children & youth

Larger gathering spaces for community building

Music & art spaces that engage and inspire

Outdoor space for community & contemplation

Enhanced accessibility & safety improvements

“



### MEET TAYLOR

The first couple of days of college were the worst I've ever felt. I knew God was with me, but I still felt so alone. One night, during our Cru Thursday night bible study, was the most I've felt God in a long, long time. I finally broke the chain that was holding me back from pursuing a genuine relationship with Jesus because of the testimony of my leader from Providence. Now, I'm the happiest I've been in ages, and I look forward to how God is going to use my story to help others in the same situation. I'm delighting in the freedom that I have in a life with just Jesus and I. I'm looking forward to how God is going to bless my future because of my obedience. Luke 1:45 says, "Blessed is she who has believed that the Lord would fulfill his promises to her!" What a blessing it is to be able to live a life trusting in God's plan! I'm no longer held back by anyone, and I'm so grateful and excited to serve a God that gives second chances."



## MEET RUTH

Ruth is 22, the eldest of 5 children to separated parents. She was able to complete the 10th grade, but had to stop schooling due to financial disadvantage. Ruth became pregnant by a man who left town, denying paternity to Ruth's daughter, Esther, born in April 2015. Ruth began studying tailoring at The Neema Project in Kitale, Kenya (a minipartnership of Providence) and has completed level 1 and is now studying for the level 2 exam. Since coming to Neema, Ruth has learned the Word of God and how to sew. Her vision is to have a large workshop of her own and share the gospel with others. We're making more seats at the table for people like Ruth.

## will you add a seat at the table?

For us at Providence, Expanding the Table is about more than expanding our physical structure, for we believe God is building culture grounded on the faith of many. When one heart is transformed by Christ, that heart becomes a catalyst of influence to the lives around it. In that light, the power of one gives us vision for the future and allows us to imagine our story ten years from now. Creating space is just the beginning!

If you've been at Providence for any amount of time, you can probably name the person who invited you to take your seat at the table. One seat at a time, we can extend our table so that everyone in our region has the chance to join the family of God.

Visit [providencewc.org/expandingthetable](https://providencewc.org/expandingthetable) to learn more about contributing any amount to our \$3,500,000 goal.

Contact [emanuele@providencewc.org](mailto:emanuele@providencewc.org) to make a contribution of stocks, bonds, CDs, other assets, or electronic funds transfer.

# God, Expand my Heart for Expanding the Table

Father God, We honor You as our Father and Provider.

We thank You for the ways You have provided both individually and corporately for us.

Above all, we want this family to honor You with our resources in a way that reveals Your heart to each other, our greater community and to the areas of the world to which You have called us.

We want our hearts and minds to be open to the ways You want to continue to provide, and we want to follow You where You are leading us.

All we have of our time, skills, energy and finances is from You and ultimately for You. Help us to let go of things that make it difficult for us to discern Your leading, forgive as we've been forgiven, and grant us courage in the face of fear.

Fill us with Your life in such a way that our hearts and minds are bursting with ideas, compassion, sacrificial generosity, and passion for Your people.

We are Yours.

In the mighty and beautiful name of Jesus, Amen.

**PROVIDENCE**  
**CHURCH**